

LOCAL CLIMATE IMPACTS

More intense and frequent storm events (all seasons)

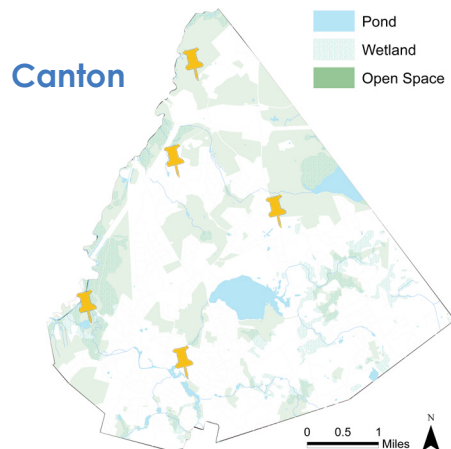
- Increase of 55% since 1960
- More intense and variable precipitation is the main climate hazard in New England
- Increase likelihood of flooding and infrastructural damage

Increasing temperatures

- Increase of 2.9F since 1895
- Increase drought and agricultural loss
- Increase in health impacts like heat-related illness, pollution, and vector-borne disease

WORKING FOR YOU

Canton has already completed many mitigation & adaptation initiatives, with many more efforts ongoing or planned in the future. Please see the Sustainability Initiatives webpage for more information. <https://www.town.canton.ma.us/845/Sustainability-Initiatives>



WANT TO LEARN MORE?

Resiliency @ Home Workshops: View a recording and resource page on measures homeowners can take to make their yards more resilient to climate change.

<https://www.town.canton.ma.us/876/Resiliency-Home-Workshops>

Planning Department



781-575-6575



lsmead@town.canton.ma.us



CLIMATE HAZARDS

101



CANTON WORKING FOR YOU

Climate change resiliency is an ongoing priority for Canton. The Town is working on identifying and mitigating climate risks, including flooding, extreme weather, and heat/drought impacts. Public and private properties will be affected more frequently by climate change.



Canton Viaduct. Photo by Sean Kent

DID YOU KNOW?

What is Mitigation & Adaptation?

Mitigation is aimed at tackling the causes and minimizing the possible impacts of climate change and reducing green house gas emissions.

Adaptation are actions taken to help communities and ecosystems cope with actual or expected effects of climate change.



WHAT IS CLIMATE RESILIENCE?

Climate resilience is the ability to anticipate, prepare for, and respond to hazardous events, trends, or disturbances related to climate.

WHAT IS LOW IMPACT DEVELOPMENT?

LIDs are development design standards that utilize plants and soils in capturing and filtering water while minimizing imperviousness.

WHAT IS CANTON DOING?

- **Conserve** existing green space for its many climate benefits. In Canton, the Stillwater Estates subdivision will preserve 53 of 93 acres of natural habitat, including walking trails
- **Integrate** green features into new development. In Canton, the Luce School Rain Garden, Devoll Field Swale, and (future) Earl Newhouse Waterfront improvements are examples of integrating nature-based solutions into existing or new developments
- **Restore** resilience through prioritizing flood resiliency at the neighborhood level. The town is developing a model of its drainage system to assess the potential for flooding and prioritize improvements. town.canton.ma.us/869/Flood-Mitigation
- Require zoning bylaws and regulations to better allow for nature-based solution. In Canton, we require LID to the greatest extent possible in zoning and subdivision regulations

HOW YOU CAN HELP

- Get a home energy audit from a Mass Save partner
- Install a generator to provide power during power outages
- Increase your energy efficiency by installing solar shades, smart thermostats, and advanced power strips
- Make the switch to renewable energy
- Plant native plant vegetation at home and in your community
- Mow your lawn at 3 inches with a mulching mower
- Plant a rain garden and use rain barrels
- Compost your food scraps
- Be an advocate! Contact state and local reps to bring attention to climate resilience and natural solutions