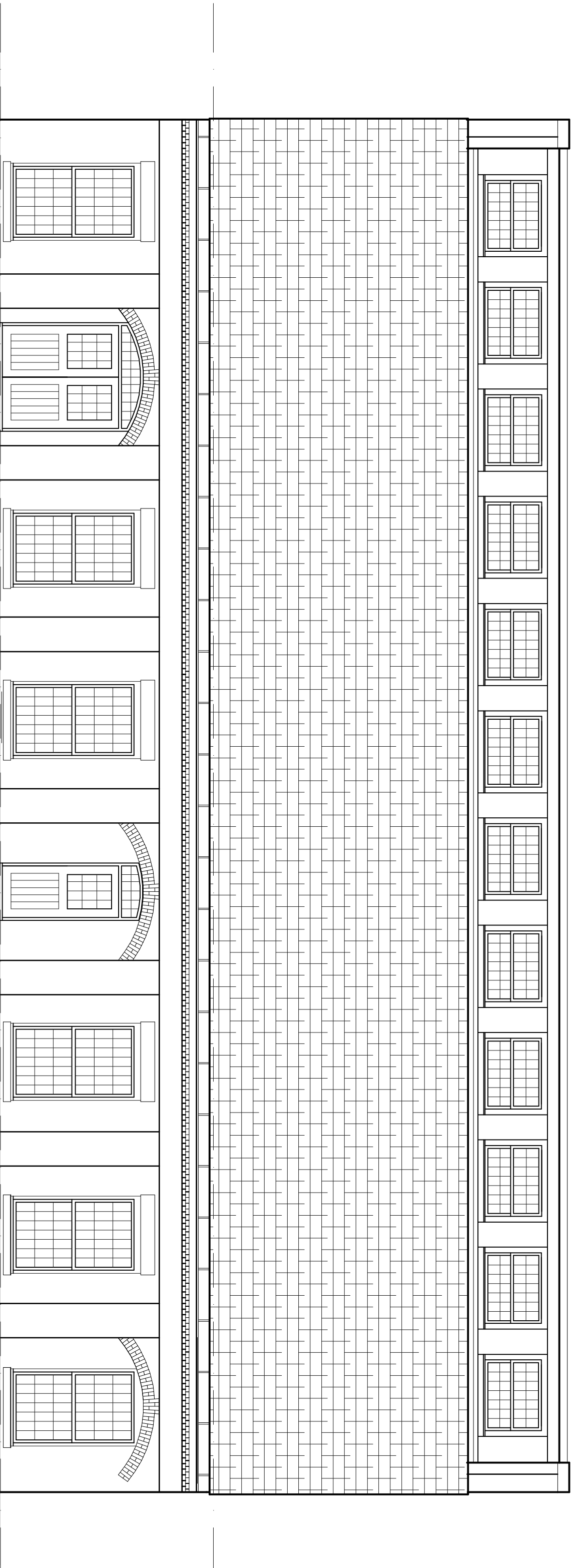
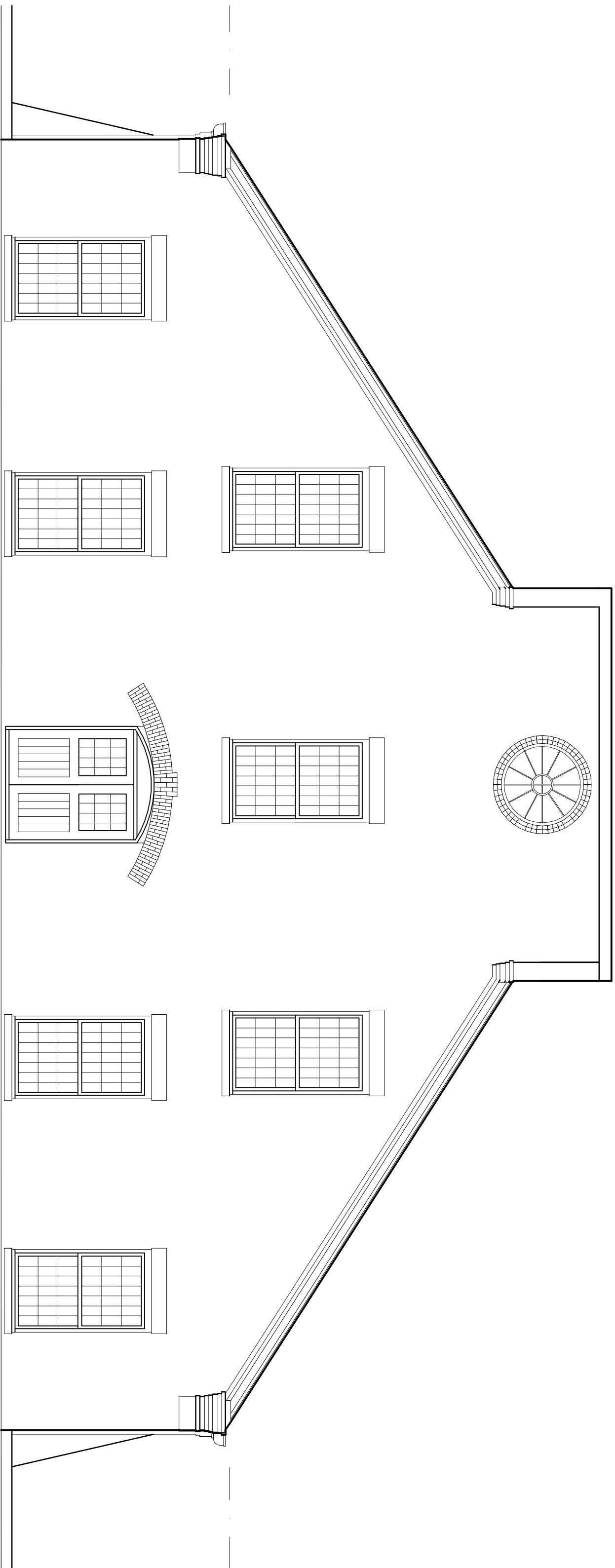


1 NORTH ENTRY BUILDING ELEVATION
EXHIBIT V DRAWING

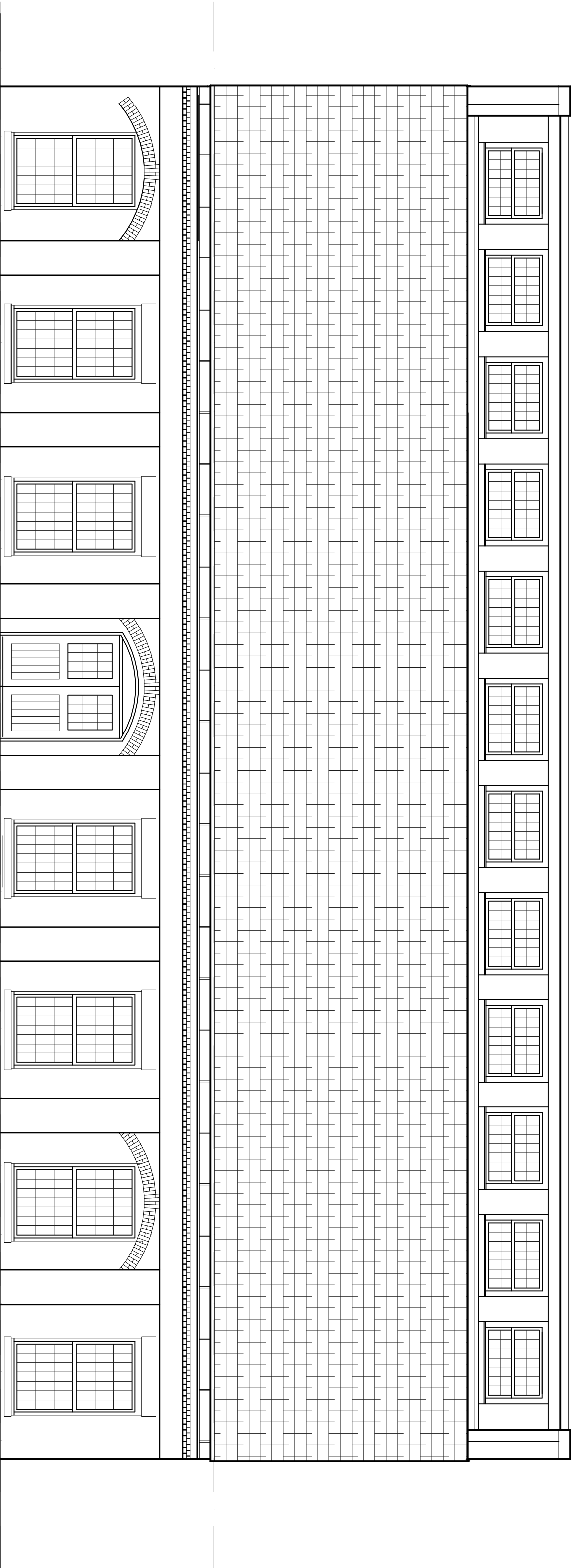


2 EAST ENTRY BUILDING ELEVATION FACING PLAZA
EXHIBIT V DRAWING

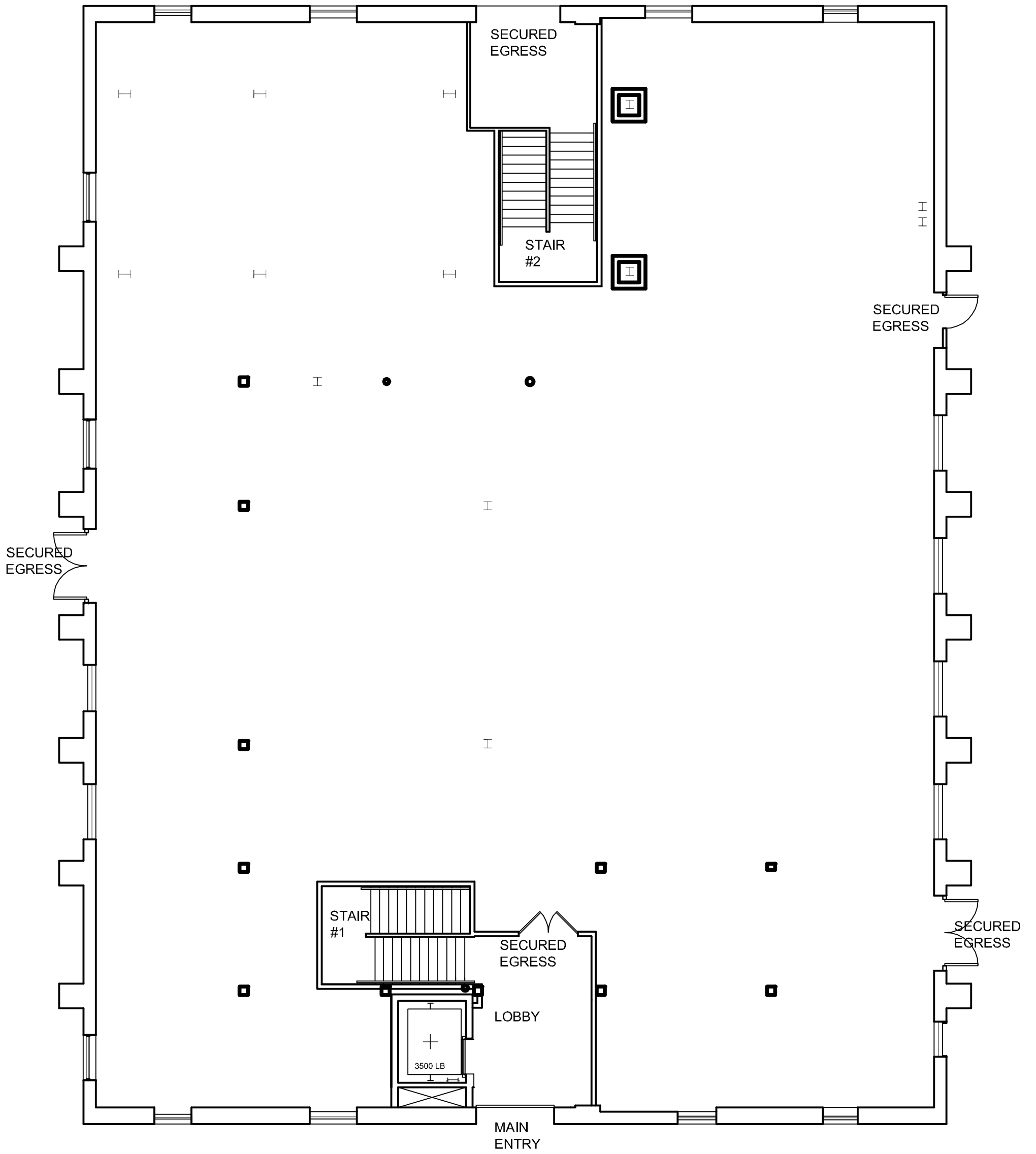


3 SOUTH ENTRY BUILDING ELEVATION
EXHIBIT V DRAWING

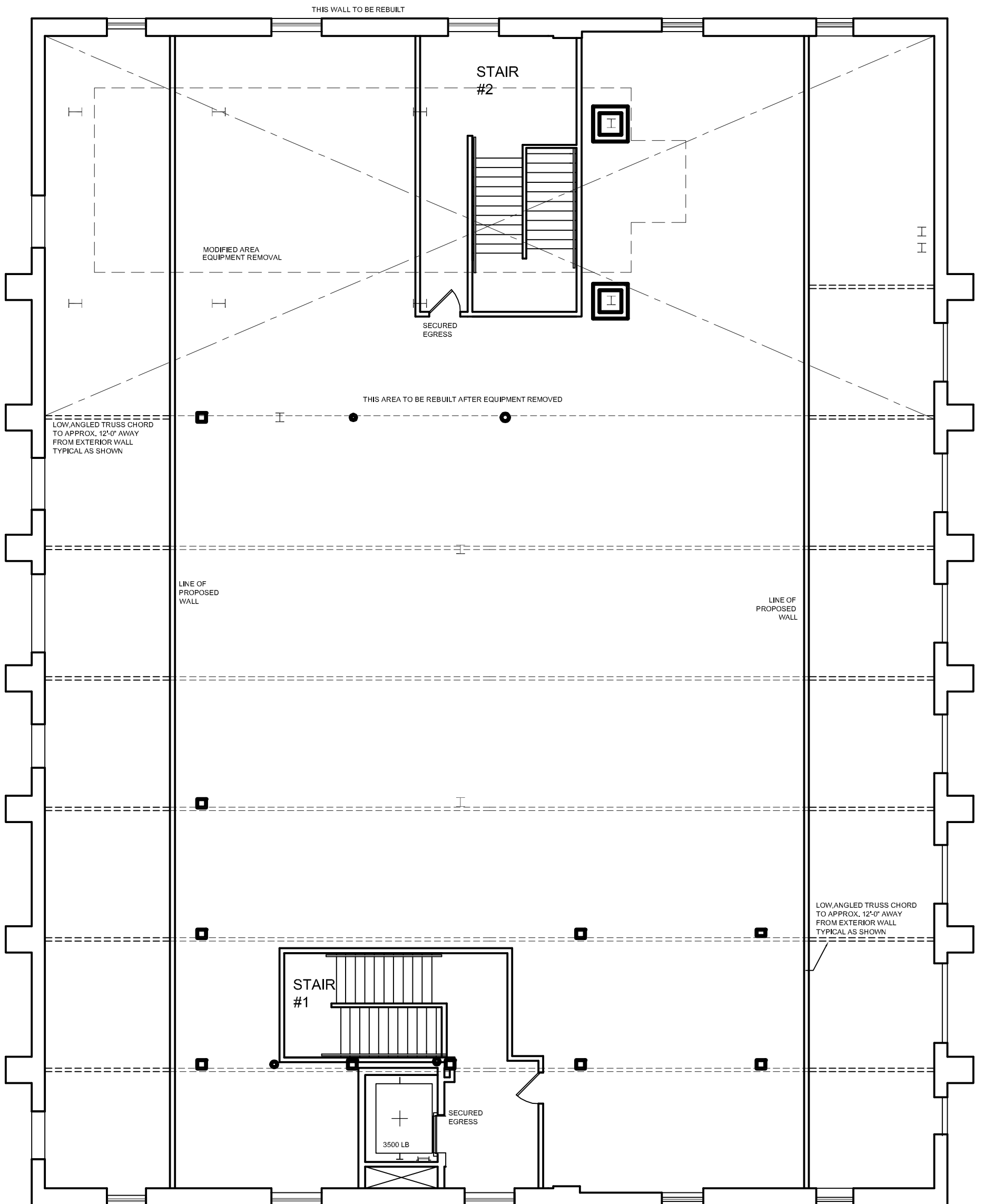
THIS WALL TO BE REBUILT



4 WEST ENTRY BUILDING ELEVATION
EXHIBIT V DRAWING



5 **ROLLING MILL BUILDING PLATE**
 ENTRY LEVEL PLAN- CANTON SCHOOL DISTRICT OFFICES
 6,347 TOTAL SQ. FT. (EXTERIOR PERIMETER)
 EXHIBIT V DRAWING



6 **ROLLING MILL BUILDING PLATE**

UPPER LEVEL PLAN- OPEN SPACE
6,347 TOTAL SQ. FT. (EXTERIOR PERIMETER)

EXHIBIT V DRAWING