

AMEND ZONING MAP, INCLUDE AREA IN SENIOR ASSISTED LIVING OVERLAY DISTRICT

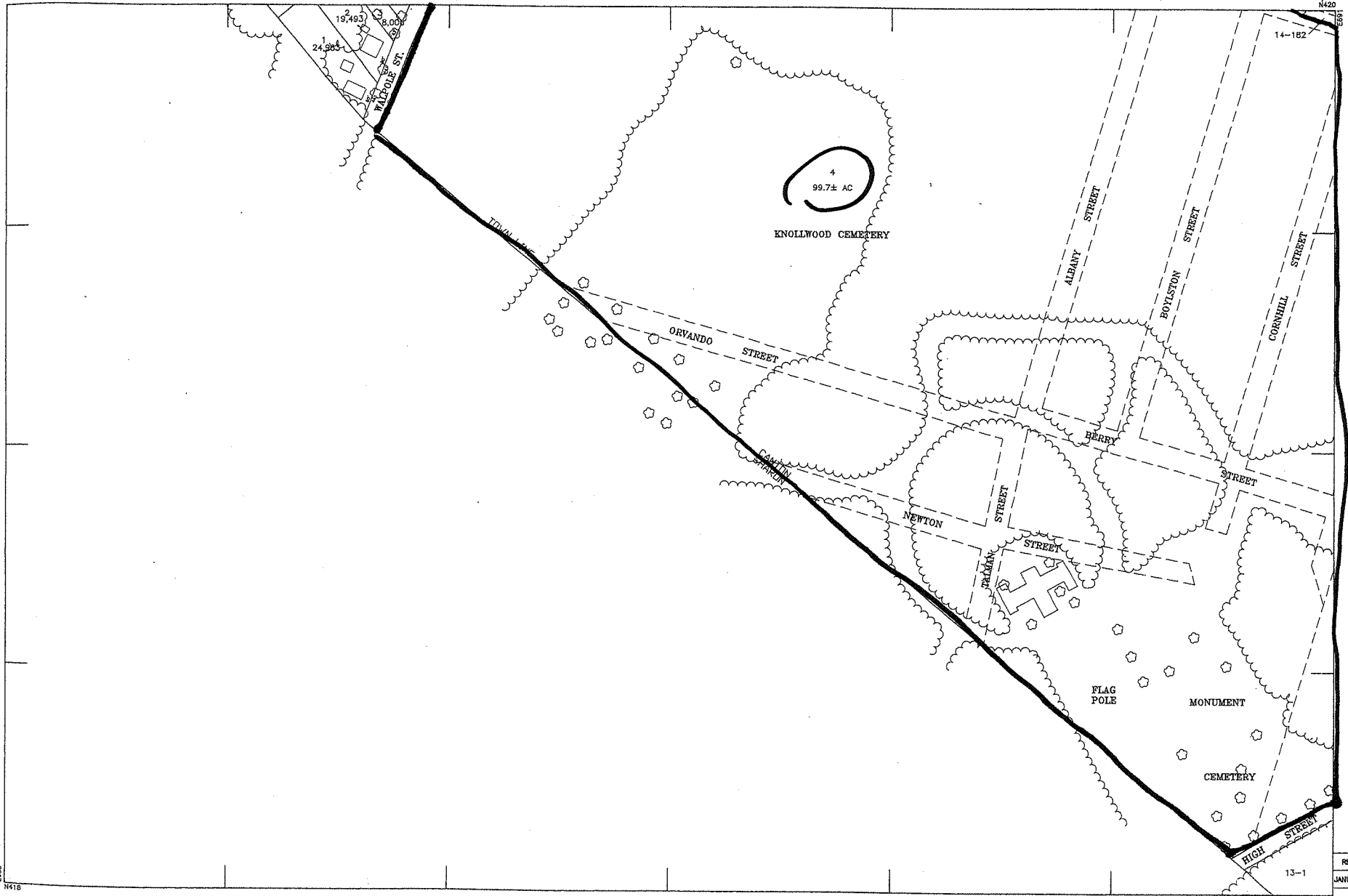
Article 24 To see if the Town will vote to amend the zoning map, as most recently amended, by placing a portion of land consisting of not less than ten (10) contiguous acres of land fronting along Walpole Street owned by Knollwood Cemetery and with not less than one hundred and twenty (120) feet of frontage along Walpole Street in the Senior Assisted Living Overlay District (Sec. 9.7) amended by vote under Article 23 of this Town Meeting warrant or take any other action in relation thereto. Said portion of the land is described as not less than ten contiguous acres of land within a larger parcel of approximately 99.7 acres of land and described in the Board of Assessors' Maps as Map 4, Lot 4.

Said parcels are shown on a map, copies of which are attached hereto and have been placed on file and are available for public review at the office of the Planning Board, at the office of the Town Clerk, and at the office of the Board of Selectmen, at the research desk at the Canton Public Library and on the Town web site.

Petition by for Anthony E. Berardi and 47 others

TOWN OF CANTON, MASSACHUSETTS

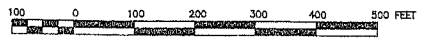
Article 24



REVISED	BY
JANUARY 2008	STANTEC, INC.

1	5	14
4	13	

PREPARED UNDER THE DIRECTION OF
THE CANTON BOARD OF ASSESSORS BY
STANTEC, INC.
141 PORTLAND STREET



500 FOOT GRID BASED
ON MASSACHUSETTS COORDINATE SYSTEM MAINLAND ZONE
THE LAST THREE DIGITS OF THE GRID NUMBERS ARE OMITTED