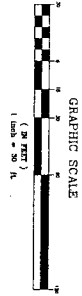
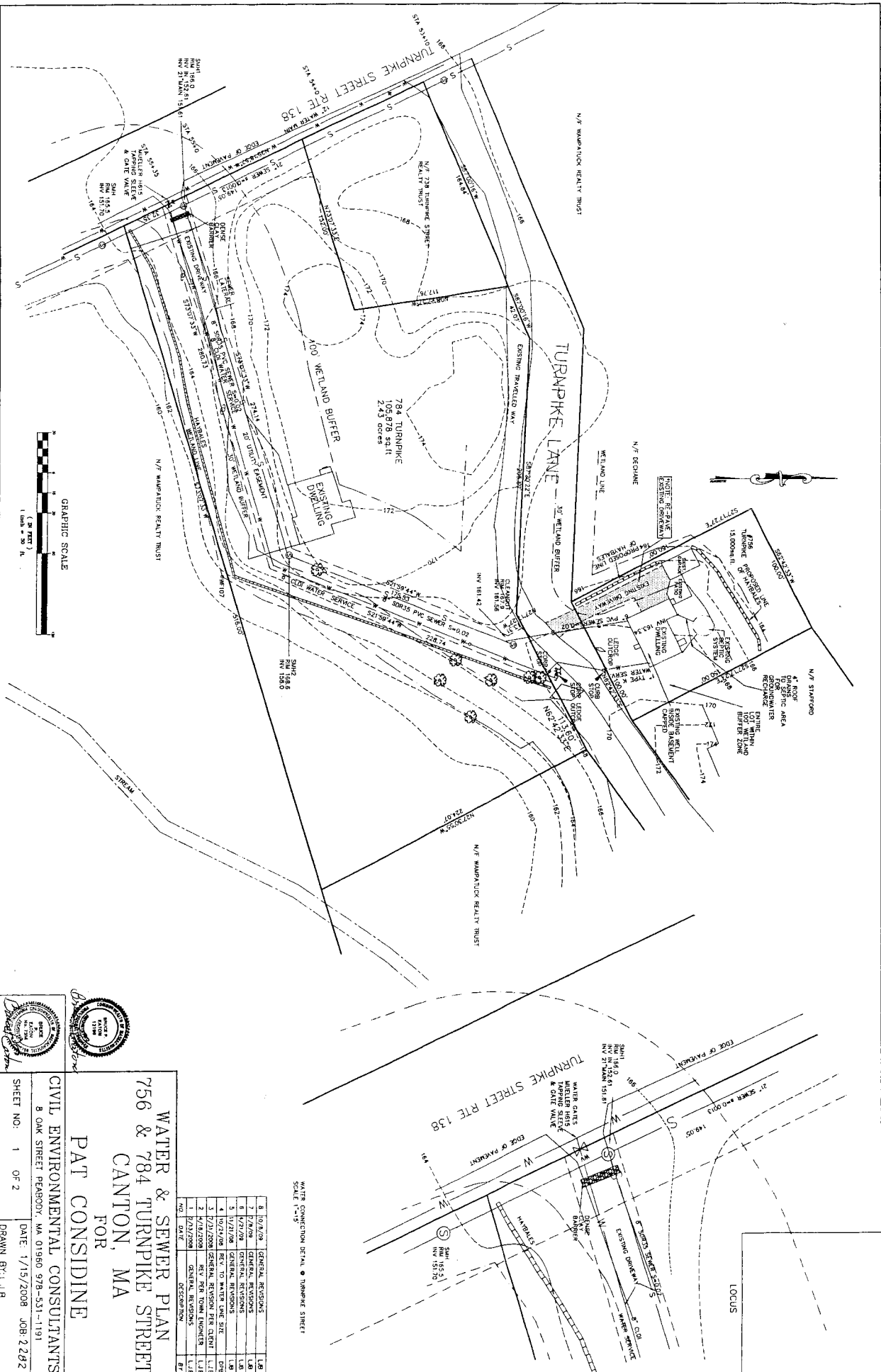


ACQUISITION OF EASEMENT(S) TURNPIKE STREET/LANE

Article 20 To see if the Town will vote to authorize the Board of Selectmen to acquire by purchase, gift or eminent domain permanent easements over or under all or any portion of the properties known as 756 Turnpike Street and 784 Turnpike Street and the right of way known as Turnpike Lane and as shown on the plan entitled "Water & Sewer Plan, 756 & 784 Turnpike Street, Canton, MA for Pat Considine," dated January 15, 2008, prepared by Civil Environmental Consultants and on file with the Town Clerk, for the purposes of accessing, installing, operating and maintaining water and sewer lines and transmitting water and sewage to and through such properties and right of way, to see if the Town will vote to appropriate, borrow pursuant to any applicable statute or transfer from available funds, a sum of money for such purposes; or to take any other action related thereto.

Board of Selectmen



WATER & SEWER PLAN
756 & 784 TURNPIKE STREET
CANTON, MA
FOR
PAT CONSIDINE

CIVIL ENVIRONMENTAL CONSULTANTS
 8 OAK STREET PEABODY, MA 01960 978-531-1191

SHEET NO: 1 OF 2
 DATE: 1/15/2008 JOB: 2282

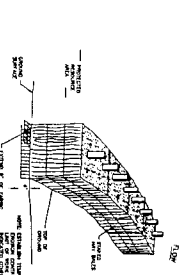
DRAWN BY: LUB

NO.	DATE	DESCRIPTION	BY
1	02/27/2008	GENERAL REVISIONS	LUB
2	04/22/2008	REV. PER TOWN ENGINEER	LUB
3	07/21/2008	GENERAL REVISIONS	LUB
4	10/21/2008	REV. TO WATER LINE SIZE	DOB
5	11/27/2008	GENERAL REVISIONS	LUB
6	12/17/2008	GENERAL REVISIONS	LUB
7	01/15/2009	GENERAL REVISIONS	LUB
8	01/29/2009	GENERAL REVISIONS	LUB

WATER CONNECTION DETAIL @ TURNPIKE STREET
 SCALE 1"=15'

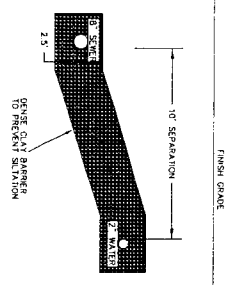
TURNPIKE 15041504 90 P 1 & 3A

Art. 20

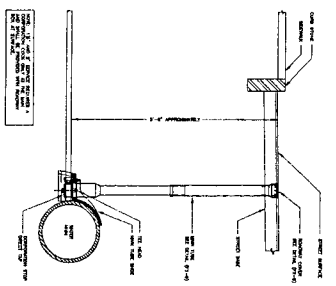


- CONSTRUCTION SPECIFICATIONS**
1. BUILT FROM THE BOTTOM OF THE CURB TO THE TOP OF A CURB OR THE CURB TO THE TOP OF THE CURB WITH BENT TOP TO MATCH THE ADJACENT WALL.
 2. HAYBALS TO BE LAYED ON THE CURB, A MINIMUM OF FOUR (4) HAYBALS PER LINEAL FOOT OF CURB.
 3. HAYBALS TO BE SECURELY ANCHORED TO THE CURB BY TWO WOODEN STAPLES DRIVEN INTO THE CURB AT THE POINT TO HOLD THE BALE TOGETHER.
 4. HAYBALS TO BE PLACED AND SPACED ON SPACERS SHALL BE MADE OF 2" X 4" WOODEN STAPLES.
 5. CONSTRUCTION SHALL BE KEPT AND SPACED TO PREVENT SILT FROM PASSING THROUGH THE CURB.

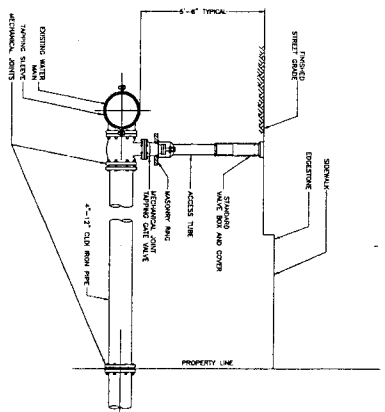
TYPICAL SILT FENCE HAYBALE BARRIER
NOT TO SCALE



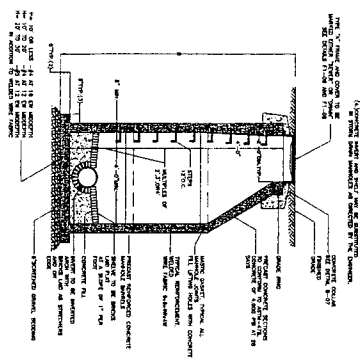
DENSE CLAY BARRIER TO PREVENT SILTATION



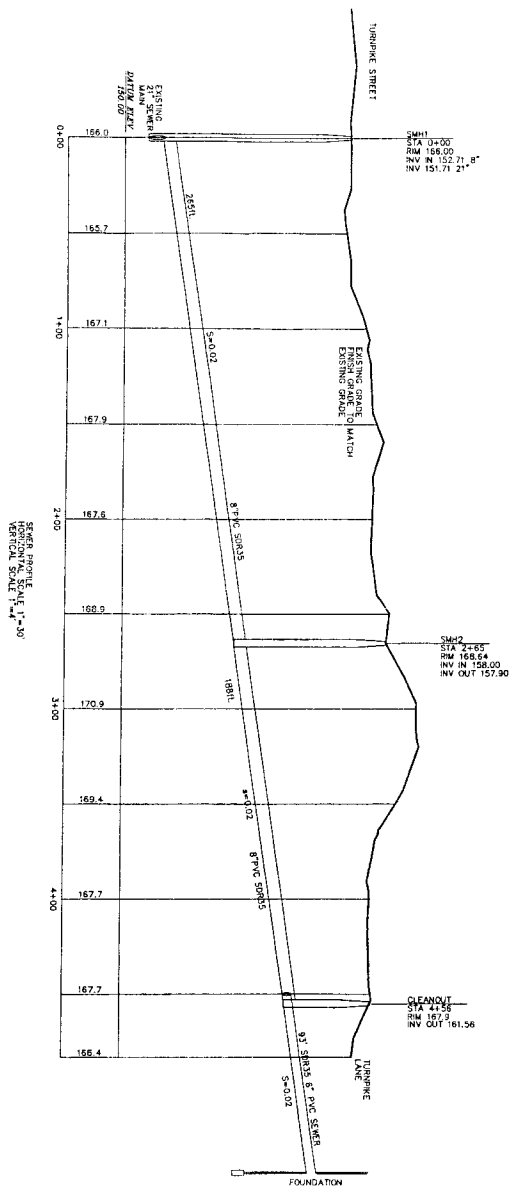
WATER SERVICE DETAIL



WATER CONNECTION DETAIL



SEWER MANHOLE DETAIL



NOTES:
 - ALL DIMENSIONS UNLESS SPECIFIED TO BE USED ONLY WHERE IT WILL BE NECESSARY TO SHOW THE LOCATION OF THE STRUCTURE.
 - ALL DIMENSIONS UNLESS SPECIFIED TO BE USED ONLY WHERE IT WILL BE NECESSARY TO SHOW THE LOCATION OF THE STRUCTURE.



PROFILE & DETAILS
756 & 784 TURNPIKE STREET
CANTON, MA
 FOR
PAT CONSIDINE
CIVIL ENVIRONMENTAL CONSULTANTS
 8 OAK STREET PEABODY, MA 01960 978-531-1191
 SHEET NO: 2 OF 2
 DATE: 1/15/2008 JOB: 2282
 DRAWN BY: L.J.B.

NO.	DATE	DESCRIPTION	BY
1	2/13/2008	GENERAL REVISIONS	L.J.B.
2	4/18/2008	REV. PER TOWN ENGINEER	L.J.B.
3	1/23/2008	GENERAL REVISION PER CLIENT	L.J.B.
4	10/21/08	GENERAL REVISIONS	L.J.B.
5	11/21/08	GENERAL REVISIONS	L.J.B.
6	4/21/09	GENERAL REVISIONS	L.J.B.
7	7/24/09	GENERAL REVISIONS	L.J.B.
8	10/24/09	GENERAL REVISIONS	L.J.B.

TURNPIKE 756d 15B 1790 P1436